



YEAR 10 - COMMON TRUST ASSESSMENTS

Information Booklet

Why do we do Common Trust Assessments?

In Multi-Academy Trusts (MATs), Years 7-10 often do the same assessments across different schools. These help teachers see how well children are doing, check progress compared with other schools, and spot anything that might need extra help.

The assessments usually include short tests to see how children think and learn, as well as tests on what they've been taught in lessons.

What can I do to get ready? Lets talk revision Techniques!

A healthy lifestyle leads to good learning! Make sure to work in a quiet space with no distractions. Put any phones or devices in another room. Studies show that children who revise with a phone next to them have a 20% decline in their learning.



and enough



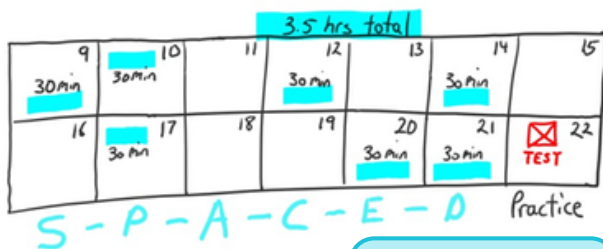
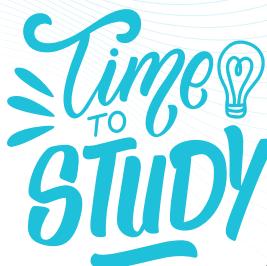
Find a quiet study space



Get enough sleep



Avoid Cramming



Space out revision



Exercise regularly





YEAR 10 – COMMON TRUST ASSESSMENTS

CET Assessments Year 10- English Language

Language Paper 2 (1 hour 45 minutes)

Writers' Viewpoints and Perspectives

Section A Reading (1 hour)

Question 1: Select four facts (4 marks)

Question 2: Compare and infer (8 marks)

Question 3: Analyse language (12 marks)

Question 4: Compare the writers' attitudes (16 marks)



Section B Writing (45 minutes)

Write an article/ speech/ letter/ essay to argue/ persuade/ explain.

Top Tips

Section A Reading

Always ensure you are answering the question focus!

Question 2: Focus on inference, you don't need to analyse!

Question 3: Zoom in on the key words and methods the writer has chosen to use.

Be specific about the effect the writer creates.

Question 4: Make sure you:

- Compare
- Use quotations

Analyse the writers' methods

Assessment Criteria for Section B Writing

A range of ideas: one per paragraph.

A one sentence paragraph for impact

A range of sentence starters and structures

A personal anecdote

Anaphoric repetition

Facts

Opinions- an expert

Repetition

Emotive language

Statistics

Triple emphasis

A counter argument

Remember to get the
Genre
Audience
Purpose right!

Revision Tips

Use your English book to review the strategies for each question

Complete past papers. These are available at physicsandmathstutor.com

Revise key skills using BBC Bitesize

Remember the timings needed for each question!





YEAR 10 – COMMON TRUST ASSESSMENTS

CET Assessments Year 10- English Literature

Literature Paper 2 (2 hours 15 minutes)

Modern Texts and Poetry

Section A: *An Inspector Calls* (45 minutes)

Section B: Power and Conflict Poetry (45 minutes)

Section C: Unseen Poetry (45 minutes)

Useful Websites

- BBC Bitesize
- Spark Notes
- Maths and Physics Tutor (for past papers)
- No Fear Shakespeare

Objective	What does it mean?
AO1	Read and understand the texts.
	Respond to the texts personally – developing your opinion and thoughts.
	Use evidence to support your points.
AO2	Analyse the language the author has used – why has he done this?
	Analyse how the author has created the play and how it is put together (the structure of it) – why has he done this?
	Analyse the form the author has used – why has he written the play in this way?
AO3	Understand the relationship between the play and the context in which it was written - how has this affected the author's writing?
AO4	Write accurately using correct spelling, punctuation and grammar.

Complete your weekly Sparx homework as this will help you retain and recall knowledge about the literature texts on the exams.



Top Tips

- Circle the question focus for each question so that you know you are answering the question.
- Plan your answer before you start writing (10 minutes).
- Write a clear thesis statement at the start of your essay:

What is the writer's message?

What ideas will you cover in your essay?

- Zoom in on the writer's choice of words and methods and explain their specific effect.
- Link your analysis to the writer's messages.
- Stick to the timings for each question so that you don't run out of time!

Use your English book to create flashcards and essays plans for key characters and themes.





YEAR 10 COMMON TRUST ASSESSMENTS

CET Assessments Year 10 - Business Studies

EXAM

Exam Board	Paper	Topic	Length of Exam	Worth ____% of your GCSE
<u>OCR</u>	<u>One</u>	<i>Business Activity, Marketing and People</i>	<u>90 Minutes</u>	<u>50%</u>

What You Need to Revise - Paper 1: Business Activity, marketing and people

1.1 Characteristics of entrepreneurs

1.2 Business plans

1.3 Ownership

- Liability
- Partnerships
- PLC and LTD

1.5 Stakeholders

- Objectives

1.6 Growth

- Organic Growth

2.2 Market Research - primary and secondary

2.3 Market Segmentation

2.4 Marketing mix

- Cost-plus pricing
- Advertising
- Promotion methods including advertising

3.3 Communication

3.4 Recruitment and Selection

- Full/part time

3.5 Motivation and Retention

- Employee retention





YEAR 10 COMMON TRUST ASSESSMENTS

CET Assessments Year 10 - Business Studies

Skills You Will Be Tested On

- Answering exam-style questions
- Using key vocabulary and formulas correctly
- Understanding command words (e.g., Explain, Analyse, Recommend)

How to Revise Well

- Use your knowledge organiser
- Make flashcards using retrieval questions
- Test yourself using retrieval questions
- Complete past paper questions
- Mark past paper questions using model answers or the mark scheme
- Revisit anything you got wrong



Where to Find Revision Resources

- Knowledge Organiser
- BBC Bitesize (OCR GCSE Business Studies): <https://www.bbc.co.uk/bitesize/topics/z7ym2sg>
- YouTube Bizconsesh OCR GCSE Business: https://www.youtube.com/@Bizconsesh/playlists?view=50&sort=dd&shelf_id=5
- Class notes
- Past papers

Help & Support

- Intervention: [Thursday 15:10 in B1]
- Speak to Miss Eaton or Mr Underwood if you need help. We are more than happy to help!





YEAR 10 COMMON TRUST ASSESSMENTS

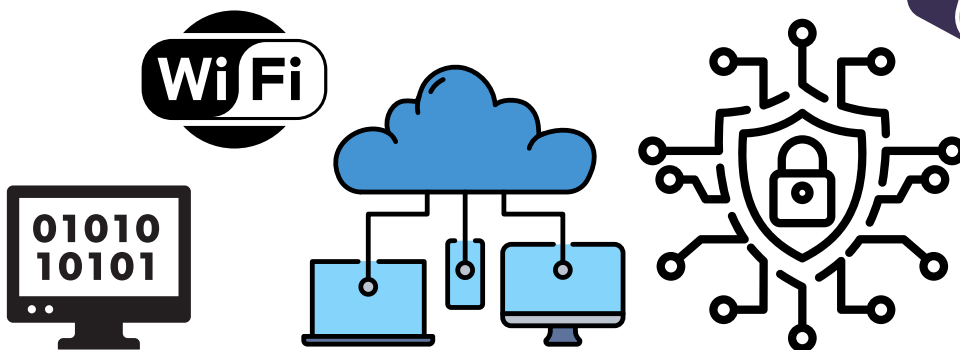
CET Assessments Year 10 - Computer Science

EXAM

Exam Board	Paper	Topic	Length of Exam	Worth ____% of your GCSE
<u>OCR</u>	<u>Paper 1</u>	<i>Computer Systems</i>	<u>90 Minutes</u>	<u>50%</u>

What You Need to Revise:

- 1.1 CPU registers
- 1.2 Types of storage, storing images, storing sound, DEN-BIN-HEX conversions, binary addition, binary shifts, ASCII and Unicode
- 1.3 Network hardware, network types, topologies, Wi-Fi, bandwidth, cloud storage, IPv4 addresses; URLs, IP & DNS
- 1.5 Functions of the operating system, utility software (Encryption)
- 1.6 Ethical and environmental issues, Legislation



What You MUST Know

- Binary conversions: Bin-Den, Bin-Hex, Binary addition, Binary shifts.





YEAR 10 COMMON TRUST ASSESSMENTS

CET Assessments Year 10 - Computer Science

Skills You Will Be Tested On

- Answering exam-style questions
- Understanding command words (e.g., State/Identify, Describe, Explain, Discuss)

How to Revise Well

- Use your knowledge organiser
- Make flashcards using retrieval questions
- Test yourself using retrieval questions
- Complete past paper questions
- Mark past paper questions using model answers or the mark scheme
- Revisit anything you got wrong



Where to Find Revision Resources

- Knowledge Organiser
- Past papers - J277 on the OCR website.
<https://www.ocr.org.uk/qualifications/gcse/computer-science-j277-from-2020/assessment/>
- Use Teach-ICT (username NG60HT, PW malware3) for:
 - Review and Recap Videos
 - Revision Activities
<https://www.teach-ict.com/>
- YouTube for:
 - Craig and Dave J277 topic videos (these can also be found in the Student Shared area)
 - <https://www.youtube.com/playlist?list=PLCiOXwirraUAEhj4TUjMxYm4593B2dUPE>



Help & Support

- Speak to Mr Underwood if you need any help.





YEAR 10 COMMON TRUST ASSESSMENTS

CET Assessments Year 10 - Creative iMedia

EXAM

Exam Board	Paper	Topic	Length of Exam	Worth ____% of your GCSE
<u>OCR</u>	<u>1</u>	<i>Level 1/Level 2 Cambridge National in Creative iMedia R093/01 Creative iMedia in the media industry</i>	<u>90 Minutes</u>	<u>50%</u>

What You Need to Revise:

Topic Area 1: The Media Industry

- Media industry sectors and products
- Traditional media vs new media, Types of products (e.g., TV, film, games, publishing, websites, social media), How sectors are evolving and overlapping
- Job roles in the media industry
- Creative roles (Creative director and Graphic artist), Technical roles (Web designer and web developer), Senior roles (Production manager), Which roles fit into pre-production, production, post-production

Topic Area 2: Factors Influencing Product Design

- Purpose of media products - Advertise/promote, educate, entertain, inform, influence
- Style, content and layout - Colour schemes, genre conventions, tone, positioning of elements
- Client requirements - How briefs are defined (Commercial use)
- Audience demographics and segmentation - Categories: age, gender, income, education, location, interests, lifestyle, why segmentation matters and how it influences design
- Research methods - Quantitative vs qualitative data
- Media codes - Visual codes: camera angles, lighting, colour, mise-en-scène, symbolic media codes, Audio codes: sound, music, effects, Typography and graphics, How codes create meaning, impact, and engagement

Topic Area 3: Pre-Production Planning

- Work planning - Components of work plans (tasks, milestones, timescales)
- Documents for ideas generation - Mind maps, mood boards
- Documents for design and planning - Asset log and wireframe layout
- Legal issues - Privacy, permissions, defamation, libel, data protection, Intellectual property rights, Regulation, certification, classification, Health and safety considerations

Topic Area 4: Distribution Considerations

- Distribution platforms - Online (streaming, social media, websites), Physical (DVD, Blu-ray, print)
- Properties and formats of media files, Image file types (JPEG, PNG, TIFF), Audio file types (MP3, WAV), Video file types (MP4, MOV), Compression and file size considerations



YEAR 10 COMMON TRUST ASSESSMENTS

CET Assessments Year 10 - Creative iMedia

Common misconceptions

- Know the difference between sectors (film, TV, publishing, gaming, web) and how they overlap
- Understand which roles belongs to pre-production, production, and post-production
- Audience segmentation is broader than age; includes lifestyle, interests, income.
- Revise privacy, defamation, and classification rules not just copyright.
- Do not mix up wireframes (for websites) with storyboards (for video).
- Media codes don't just only apply to film/TV, but they apply across all media products.

Skills You Will Be Tested On

- Answering exam-style questions
- Using key vocabulary or formulas correctly
- Understanding command words (e.g., Explain, Analyse, Evaluate)

What You MUST Know

- Key terms
- Essential facts

How to Revise Well

- Use your knowledge organiser
- Make flashcards using retrieval questions
- Test yourself using retrieval questions
- Complete past paper questions
- Mark past paper questions using model answers or the mark scheme
- Revisit anything you got wrong



Where to Find Revision Resources

- <https://www.knowitallninja.com>
- Past papers
- Your class revision booklet
- Knowledge organiser

Help & Support

- Intervention: [Monday and Thursday/3.10 - 4.10pm]
- Speak to Ms Haque/Ms Hussain if you need help. We are more than happy to help!



YEAR 10 COMMON TRUST ASSESSMENTS

CET Assessments Year 10 - Geography

Paper - 1h 30m, 88 marks. Working at a mark a minute.

9 marker - 2 PEDaL and conclusion.

6 marker - 2 PEDaL.

4 marker - point, develop; point develop.

3 marker - point, develop, develop.

2 marker - point, develop.

1 marker - point.

Use the figure - it is there to help you. In figure 1 I can see...

Graphs - complete the graph (pencil and ruler), describe the graph (trend, data, sum), describe the distribution (say where something is and give an example)

Use a calculator for any maths questions.

EXAM



Topics to revise:

Urban issues and challenges - urbanisation trends, push and pull factors. Opportunities and challenges of life in Lagos (Makoko) and Nottingham. Use of urban planning in Lagos (Makoko floating school) and regeneration in Nottingham (Broadmarsh).

Living world - Ecosystems, food webs, food chains. Rainforests (Amazon) - characteristics, nutrient cycle, plant and animal adaptations, causes, impacts and responses to deforestation.

Cold environments (Alaska) - characteristics, nutrient cycle, plant and animal adaptations, opportunities and challenges of economic development. Management of cold environments

Rivers - characteristics, processes (erosion X4, transportation X4 and deposition. Formation of landforms, flooding and hydrographs and river management

Resources - food, water and energy supply and demand





YEAR 10 COMMON TRUST ASSESSMENTS

CET Assessments Year 10 - Geography

Command/ key Words and their meanings:

Identify - say what you see

Describe - Tell me about/ talk about...

Explain - Give reasons why/ how

Assess - make a judgement

Opportunity - good things

Challenge - bad thing

Do you agree? - give your opinion



Useful Resources:

- Use your knowledge organiser to make flash cards to help your revision
- BBC bitesize (AQA)
- Seneca (AQA)



BBC
BITESIZE





ELLIS GUILFORD SCHOOL
Creative Education Trust

YEAR 10 COMMON TRUST ASSESSMENTS

CET Assessments Year 10 - History

EXAM

Paper 1 - 80mins (aim 25mins for the Western Front and 45mins for Medicine with 10minutes for checking the paper).

Paper 2 - 55 mins

Topics to revise:

Paper 1: Medicine and the Western Front

Fighting on the Western Front

Blood Transfusion

Conditions on the Western Front

Medieval Medicine - Ideas about illness, cures and preventions

The Great Plague (1665)

Florence Nightingale

The Cholera Epidemic (1854)

Germ Theory (1861)

Joseph Lister - Carbolic Acid (1865)

Robert Koch

Magic Bullets

Penicillin

The NHS

Technology used for treatment and diagnosis of illness



Where **EGScellence** thrives,
and the **EGSceptional** shine



YEAR 10 COMMON TRUST ASSESSMENTS

CET Assessments Year 10 - History

Paper 2: Anglo-Saxon and Norman England (1060-1088)

The Battle of Hastings

Motte and Bailey Castles

The Feudal System

Anglo-Saxon Rebellions - Edwin and Morcar (1068), Revolt of the Northern Earls (1069), Hereward the Wake (1071)

The Harrying of the North

The Domesday Book (1086)

Command/ key Words and their meanings:

Source - Something used to find out about the past

Follow Up - How would you look into a subject further?

Describe - Tell me about/ talk about...

Explain - Give reasons why/ how

Useful - Why is a source helpful for an Historian looking into something?

How far do you agree? - You are being asked to give an opinion and the reasons for your opinion.



Resources to help:

- Knowledge Organiser
- Quizlet home work set over HT - use these to make flashcards to help you revise the topics - <https://quizlet.com/join/AWUK2hGOA?i=6blm42&x=1bqt> (a hard copy will be on class charts shortly).
- Home-learning quizzes from the year - booklets have been provided and can be found on Quizlet.





YEAR 10 COMMON TRUST ASSESSMENTS

CET Assessments Year 10 - Foundation Maths

EXAM

What You Need to Revise:

Paper A.

- Four operations with positive and negative integers
- Place value, rounding, estimation, upper and lower bounds
- Unit conversions
- Percentage and fraction of an amount
- Ratio (sharing, ratios as fractions)
- Proportion and best value
- Solving all types of linear equations
- Substitution into formulae
- Sequences (finding missing terms)
- Plotting coordinates and graphs
- Estimation from a graph
- Angles Rules
- Congruent triangles
- Area and surface area
- Transformations
- Inequalities (solving and on a number line)

Paper C.

- Converting between FDP
- Simplifying expressions
- Types of angles
- Lines of symmetry
- Money calculations
- Pictograms
- Writing ratio
- Calculating area and perimeter
- Calculating probabilities
- Direct proportion
- Forming and solving equations from word problems
- Plotting linear graphs

Paper A - Non Calculator, 60 minutes

Paper B - Calculator, 60 minutes

Paper C - Calculator, 60 minutes

Paper B.

- Bar charts and data interpretation
- Ordering positive and negative integers
- Sequences
- Money problems
- Comparing decimals and fractions
- Properties of 3D shapes
- Function machines
- Fractions of amounts
- Using a calculator
- Frequency trees
- Coordinates and transformations
- Scatter graphs
- Expanding brackets
- Ratio (Writing ratios in simplest form, converting ratios to fractions, writing as 1:n)
- Speed, distance and time
- Best value comparisons

- Using equations of the form $y = mx + c$
- Reading values from graphs
- Problem solving with averages
- Rearranging formulae
- Trigonometry
- Standard form
- Percentage problems



YEAR 10 COMMON TRUST ASSESSMENTS

CET Assessments Year 10 - Foundation Maths

Command/ key Words and their meanings:

Arrange - Put numbers or information in the correct order

Calculate - Work out a numerical answer, showing working

Compare - Decide which is bigger/better and explain why

Complete - Fill in the missing values correctly

Convert - Change a value from one form or unit to another

Describe - Say what you notice, using correct mathematical words

Determine - Work out the answer using the information given

Draw - Use a ruler, axes or scale accurately to create a diagram or graph

Estimate - Find an approximate answer, usually by rounding to 1 SF

Evaluate - Calculate the final value of an expression

Expand - Multiply out brackets

Explain - Give a mathematical reason using words and/or calculations

Express - Write something in a particular form (e.g. as a fraction or ratio)

List - Write all the possible answers clearly

Plot - Mark points accurately on axes

Represent - Show information using diagrams, graphs or symbols

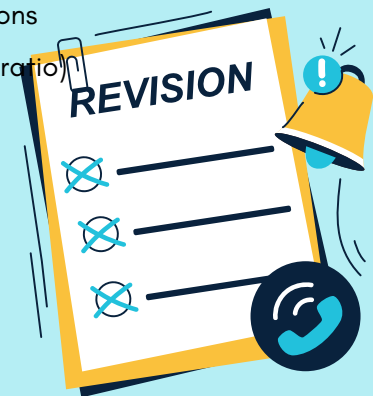
Round - Make a number simpler while keeping it close in value

Show - Provide working to prove how you got the answer

Simplify - Write an expression in the simplest form

Solve - Find the value(s) that make the statement or equation true

Work out - Calculate using a suitable method



Where to Find Revision Resources - Useful websites

- [Sparx maths](#)
- [Corbett Maths](#)
- [Maths Genie](#)
- [1st Class Maths](#)





YEAR 10 COMMON TRUST ASSESSMENTS

CET Assessments Year 10 - Higher Maths

EXAM

What You Need to Revise:

Paper A.

- Simplifying fractions, expressing one quantity as a fraction of another
- Ratio problems
- Percentage increase and decrease
- Rounding to decimal places and significant figures
- Finding upper and lower bounds
- Solving equations with brackets and unknowns on one or both sides
- Solving simple inequalities and representing solutions on a number line
- Substitution
- Finding the n th term of linear sequences
- Plotting coordinates
- Interpreting straight-line graphs
- Angles in parallel lines
- Angles in triangles and quadrilaterals
- Area and Perimeter: Triangles, rectangles and circles
- Transformations: Reflections, rotations and translation vectors
- Probability diagrams

Paper C.

- Percentage increase and decrease
- Reverse percentage problems
- Writing numbers in standard form
- Calculating with standard form
- Sharing amounts using ratios
- Using fractions within ratio problems
- Linear graphs
- Identifying y -intercepts and gradients
- Quadratic graphs
- Using fractions and decimals
- Venn diagrams

Paper A - Non Calculator, 60 minutes

Paper B - Calculator, 60 minutes

Paper C - Calculator, 60 minutes

Paper B.

- Linear sequences
- Quadratic sequences
- Pythagoras' theorem
- Expanding brackets
- Plans and elevations
- Speed, distance and time
- Converting between units
- Linear graphs
- Averages
- Percentages
- Expected frequency
- Completing probability trees
- Calculating probabilities
- Quadratic graphs
- Ratio and proportional reasoning
- Coordinates and gradients
- Indices
- Prime factorisation
- Interpreting pie charts
- Volume
- Substitution

- Estimating probability
- Estimating the mean from grouped data
- Angle rules
- Expanding brackets
- Simplifying expressions
- Factorising quadratic expressions
- Forming and solving equations
- Scale drawings and maps
- Speed, distance and time
- Congruence and triangle properties
- Trigonometry



YEAR 10 COMMON TRUST ASSESSMENTS

CET Assessments Year 10 - Higher Maths

Command/ key Words and their meanings:

Arrange - Put numbers or information in the correct order

Calculate - Work out a numerical answer, showing working

Compare - Decide which is bigger/better and explain why

Complete - Fill in the missing values correctly

Construct - Draw accurately using mathematical equipment

Convert - Change a value from one form or unit to another

Draw - Use a ruler, axes or scale accurately to create a diagram or graph

Estimate - Find an approximate answer, usually by rounding to 1 SF

Evaluate - Calculate the final value of an expression

Expand - Multiply out brackets

Explain - Give a mathematical reason using words and/or calculations

Justify - Give a clear mathematical reason why an answer is correct

List - Write all the possible answers clearly

Plot - Mark points accurately on axes

Prove/Show that - Use algebra or reasoning to demonstrate a result is always true

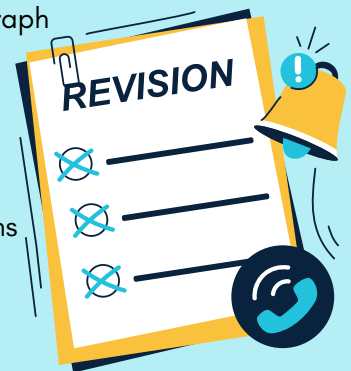
Represent - Show information using diagrams, graphs or symbols

Round - Make a number simpler while keeping it close in value

Sketch - Draw a clear but not perfectly accurate diagram or graph

Simplify - Write an expression in the simplest form

Solve - Find the value(s) that make the statement or equation true



Where to Find Revision Resources - Useful websites

- [Sparx maths](#)
- [Corbett Maths](#)
- [Maths Genie](#)
- [1st Class Maths](#)





YEAR 10 COMMON TRUST ASSESSMENTS

CET Assessments Year 10- Religious Studies

EXAM

Paper 1. 75 minute Exam

A range of topics that include:

- Christianity: Beliefs & Teachings
- Islam: Beliefs & Teachings
- Theme B: Religion & Life

Topics that you should be revising.

1. Christianity: Beliefs & Teachings

- Ascension, crucifixion, incarnation & resurrection
- Heaven & Hell
- The Trinity
- Role of Christ in salvation
- Evil & Suffering

2. Islam: Beliefs & Teachings

- Five Roots of Shi'a Islam
- Imamate
- Phrophet Adam
- Muhammad - History & Influence
- Al-Qadr - Predestination
- Ways to please Allah

3. Theme B: Religion & Life

- Stewardship & Dominion
- Ways to save the planet
- Abortion - For & against
- Animal Experimentation
- Ways to care for the environment
- Ways to achieve heaven

Help & Support

Pop-in Sessions
Thursdays, D1, 3 -
4pm
with Mrs Evans



HELPFUL TIPS

Helpful tips on how to revise can be found on the cover page of this booklet

Where to Find Revision Resources - Useful websites

- Your Knowledge Organiser
- Your pink revision book
- BBC Bitesize
- CoPilot
- You Tube - google the topic with AQA RS in the search



ELLIS GUILFORD SCHOOL
Creative Education Trust

YEAR 10 COMMON TRUST ASSESSMENTS

CET Assessments Year 10 - Science AQA GCSE Combined Science (Trilogy) - Foundation Tier

Biology Paper 1F - Cell Biology, Organisation, Infection & Response, Bioenergetics

Cell Biology

- Animal and plant cell structures
- Prokaryotic vs eukaryotic cells
- Features of bacterial cells
- Stem cells

Organisation

- Enzymes
- Products of digestion
- The digestive system
- The heart and circulatory system
- Components of blood
- Blood donation

Infection and Response

- Types of pathogen
- Communicable diseases - spread and prevention
- The immune system
- How vaccines work
- Antibiotics

Bioenergetics

- Photosynthesis
- Factors affecting the rate of photosynthesis
- Respiration - aerobic and anaerobic



Chemistry Paper 1F - Atomic Structure, Bonding, Quantitative Chemistry, Chemical Changes, Energy Changes

Atomic Structure and the Periodic Table

- The development of the atomic model
- The structure of an atom
- Isotopes
- Calculating relative atomic mass from isotope abundance data
- The Periodic Table
- Group 0 (noble gases)





YEAR 10 COMMON TRUST ASSESSMENTS

CET Assessments Year 10 - Science (Trilogy) - Foundation Tier

Topic List. Continued....

Bonding, Structure and Properties

- Covalent bonding
- Naming compounds from their formulas
- Forms of carbon
- Calculating relative formula mass from relative atomic masses
- Ionic bonding

Chemical Changes

- Reactions of metals with acids
- Investigating temperature changes in reactions
- Identifying variables
- The reactivity series
- Extraction of metals
- Electrolysis of aluminium oxide

Energy Changes

- Exothermic and endothermic reactions

Physics Paper 1F - Energy, Electricity, Particle Model of Matter, Atomic Structure

Energy

- Energy stores and transfers
- Conservation of energy
- Renewable and non-renewable energy resources
- Specific heat capacity - required practical
- Energy efficiency - reducing wasted energy

Electricity

- Drawing simple circuit diagrams
- Series circuits
- Current, potential difference, and resistance
- Calculating charge flow
- How resistance changes with temperature





YEAR 10 COMMON TRUST ASSESSMENTS

CET Assessments Year 10 - Science (Trilogy) - Foundation Tier

Topic List. Continued....

- Current-potential difference graphs
- Diodes
- Mains electricity
- AC vs DC

Particle Model of Matter

- Density
- Changes of state
- Internal energy
- Specific latent heat

Atomic Structure

- The structure of the atom
- Isotopes
- Types of radiation
- Radioactive decay and half-life
- Uses and dangers of radiation

Key Skills Across Paper 1s

- Reading and interpreting graphs and tables
- Plotting data points on a graph
- Identifying patterns and trends in data
- Calculating a mean
- Identifying independent, dependent, and control variables
- Choosing suitable equipment for measurements
- Using equations - substituting values and showing working
- Converting units (e.g. g to kg, cm^3 to dm^3)
- Evaluating claims using scientific evidence
- Matching key terms to definitions
- Multiple choice - reading all options carefully before selecting

Command Words.

- **Describe** - give detail
- **Explain** - give reason
- **Compare** - similarities (same) and differences
- **Evaluate** - advantages, disadvantages, justified (I think and why) conclusion
- **Calculate** - to work out
- **Justify** - answer with evidence
- **Draw** - diagrams and graphs
- **Plot** - mark on graph
- **Define** - give meaning
- **State** - what is



Command words are the words and phrases used in exams that tell children how they should answer a question to secure the highest marks.

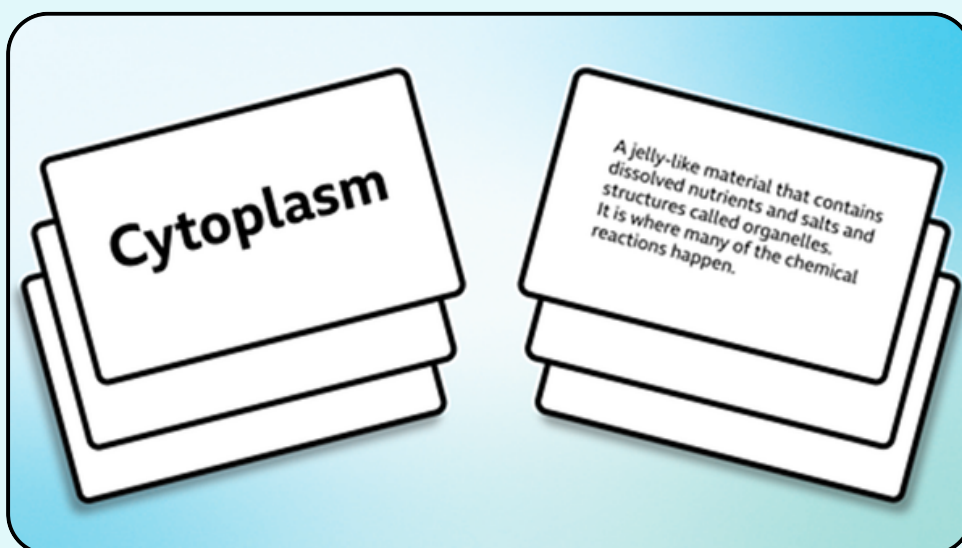




YEAR 10 COMMON TRUST ASSESSMENTS

Revision Techniques.

- Flashcards: Write a question on the front of the flashcard and the answer on the back. Keep testing yourself regularly.



- Complete your weekly Sparx Science homework: this improves your ability to recall through constantly testing your retrieval.
- Use this prompt with AI and ask it to quiz you: "I am a KS3 student studying science. Please test me on **[topic name]** from the **AQA Combined Science** course. Ask me **one question at a time**. Give me **multiple choice / short answer / explain-why questions**. After each answer, **tell me if I am correct**. If I am wrong, **explain the correct answer simply**. At the end, **give me a short summary of what I need to revise.**"
- Partner up with a friend and learn a topic each. Then teach each other the topic.
- Ask your teachers for exam papers and questions to try.





YEAR 10 COMMON TRUST ASSESSMENTS

CET Assessments Year 10 - Science AQA GCSE Combined Science (Trilogy) - Higher Tier

Biology Paper 1F - Cell Biology, Organisation, Infection & Response, Bioenergetics

Organisation - The Heart and Circulatory System

- Structure of the heart - naming blood vessels
- The function of the heart and how blood flows through it
- Explaining symptoms of heart defects
- Evaluating risks of surgical procedures

Infection and Response

- Types of pathogens and how diseases spread
- Antibiotics
- How vaccines work

Bioenergetics - Photosynthesis

- Investigating the rate of photosynthesis
- The effect of light intensity on the rate of photosynthesis
- Using the inverse square law to calculate light intensity
- The effect of temperature on enzyme activity and photosynthesis rate
- Choosing appropriate measuring equipment for accuracy

Cell Biology - Transport in Cells

- Osmosis - investigating the effect of surface area
- Why percentage change in mass is more valid
- Describing and explaining results over different time periods
- Adapting experimental methods

Bioenergetics - Respiration

- Anaerobic respiration in plants (fermentation)

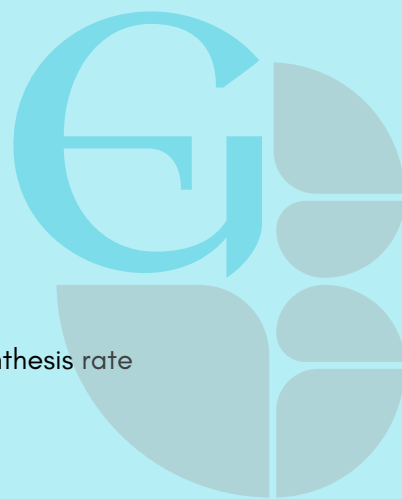
Chemistry Paper 1F - Atomic Structure, Bonding, Quantitative Chemistry, Chemical Changes, Energy Changes

Chemical Changes - Electrolysis

- Electrolysis of molten and aqueous compounds
- Plotting and interpreting graphs of mass change at electrodes over time
- Calculating concentration of a solution (g/dm^3)

Energy Changes

- Defining and identifying exothermic reactions
- Calculating percentage by mass of an element in a compound
- Planning a method to investigate temperature changes in reactions





YEAR 10 COMMON TRUST ASSESSMENTS

CET Assessments Year 10 - Science (Trilogy) - Higher Tier

Topic List. Continued....

Atomic Structure and the Periodic Table

- The development of the atomic model
- Identifying atoms vs ions
- Group 7 (halogens)
- Halogen displacement reactions and explaining the reactivity trend

Chemical Changes - Metals

- Extraction of metals
- Electrolysis of aluminium oxide
- Reduction and oxidation in extraction reactions
- Comparing the cost of extracting different metals
- Alloys

Bonding, Structure and Properties

- Properties of ionic, covalent, and metallic substances
- Comparing giant covalent structures (diamond, graphite) with simple molecules

Physics Paper 1F - Energy, Electricity, Particle Model of Matter, Atomic Structure

Energy

- Energy stores and transfers
- Renewable and non-renewable energy resources
- Negative environmental impacts of renewable energy
- Specific heat capacity -required practical
- Energy efficiency and reducing wasted energy
- Storing excess energy from the National Grid
- Calculating power, work done, and energy using equations

Electricity

- Drawing circuit diagrams
- Investigating resistance
- Plotting and interpreting current-potential difference graphs





YEAR 10 COMMON TRUST ASSESSMENTS

CET Assessments Year 10 - Science (Trilogy) - Higher Tier

Topic List. Continued....

- Calculating resistance from current and potential difference
- Power ratings of resistors - determining suitability for a circuit
- Mains electricity - naming wires and colours
- AC vs DC
- Multi-step calculations involving power, energy, and time

Atomic Structure

- Types of nuclear radiation
- Properties and uses of different types of radiation
- Radioactive decay and half-life

Key Skills Across Paper 1s

- Reading and interpreting graphs and tables
- Plotting data points on a graph
- Identifying patterns and trends in data
- Calculating a mean
- Identifying independent, dependent, and control variables
- Choosing suitable equipment for measurements
- Using equations - substituting values and showing working
- Converting units (e.g. g to kg, cm^3 to dm^3)
- Evaluating claims using scientific evidence
- Matching key terms to definitions
- Multiple choice - reading all options carefully before selecting

Command Words.

- **Describe** - give detail
- **Explain** - give reason
- **Compare** - similarities (same) and differences
- **Evaluate** - advantages, disadvantages, justified (I think and why) conclusion
- **Calculate** - to work out
- **Justify** - answer with evidence
- **Draw** - diagrams and graphs
- **Plot** - mark on graph
- **Define** - give meaning
- **State** - what is



Command words are the words and phrases used in exams that tell children how they should answer a question to secure the highest marks.

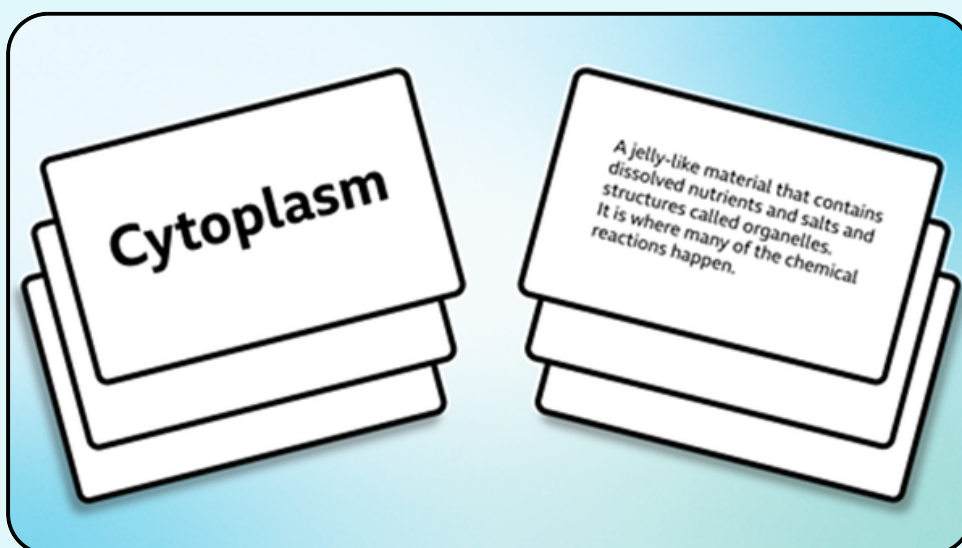




YEAR 10 COMMON TRUST ASSESSMENTS

Revision Techniques.

- Flashcards: Write a question on the front of the flashcard and the answer on the back. Keep testing yourself regularly.



- Complete your weekly Sparx Science homework: this improves your ability to recall through constantly testing your retrieval.
- Use this prompt with AI and ask it to quiz you: "I am a KS3 student studying science. Please test me on **[topic name]** from the **AQA Combined Science** course. Ask me **one question at a time**. Give me **multiple choice / short answer / explain-why questions**. After each answer, **tell me if I am correct**. If I am wrong, **explain the correct answer simply**. At the end, **give me a short summary of what I need to revise.**"
- Partner up with a friend and learn a topic each. Then teach each other the topic.
- Ask your teachers for exam papers and questions to try.





ELLIS GUILFORD SCHOOL
Creative Education Trust

YEAR 10 COMMON TRUST ASSESSMENTS

CET Assessments Year 10 - Science AQA GCSE Separate (Triple) Science - Higher Tier

Topics marked with ★ are triple-only content not found on the combined science (Trilogy) papers.

Biology Paper 1H (8461/1H) - Cell Biology, Organisation, Infection & Response, Bioenergetics

Infection and Response

- Measles
- Drug development
- Antibiotics
- How vaccines work
- ★ Monoclonal antibodies
- ★ Plant diseases

Organisation

- Digestive enzymes
- The heart and circulatory system
- ★ The effect of exercise on the body

Cell Biology

- Microscopy and magnification calculations
- Eukaryotic and prokaryotic cells
- Cell specialisation and differentiation
- Stem cells
- Transport in cells
- Osmosis required practical
- ★ Cell cycle and mitosis in detail

Bioenergetics

- Photosynthesis
- The inverse square law applied to light intensity
- Effect of temperature on photosynthesis and enzyme activity
- Aerobic and anaerobic respiration
- ★ Metabolism





YEAR 10 COMMON TRUST ASSESSMENTS

CET Assessments Year 10 - Separate (Triple) Science - Higher Tier

Chemistry Paper 1H (8462/1H) - Atomic Structure, Bonding, Quantitative Chemistry, Chemical Changes, Energy Changes

Atomic Structure and the Periodic Table

- Periodic Table
- Properties of metals
- Isotopes
- Estimating relative atomic mass from isotope abundance
- Development of the atomic model
- Electronic structure
- Group 7 (halogens)
- Halogen displacement reactions and the reactivity trend
- ★ Transition metals

Bonding, Structure and Properties

- Ionic, covalent, and metallic bonding
- Properties of giant covalent structures vs simple molecules
- ★ Dot and cross diagrams for covalent bonding in detail

Quantitative Chemistry

- Calculating percentage by mass of an element in a compound
- Calculating concentration in g/dm^3
- ★ Moles, molar mass, and Avogadro's number
- ★ Titration calculations

Chemical Changes

- Extraction of metals
- Electrolysis of aluminium oxide
- Half equations for electrolysis
- Reduction and oxidation in terms of electron transfer
- Comparing costs of extracting different metals
- Reactivity series and displacement reactions
- ★ Strong and weak acids

Energy Changes

- Exothermic and endothermic reactions
- Planning a method to investigate temperature change
- ★ Bond energy calculations
- ★ Reaction profiles





ELLIS GUILFORD SCHOOL
Creative Education Trust

YEAR 10 COMMON TRUST ASSESSMENTS

CET Assessments Year 10 - Separate (Triple) Science - Higher Tier

Physics Paper 1H (8463/1H) - Energy, Electricity, Particle Model of Matter, Atomic Structure

Energy

- Renewable vs non-renewable energy resources
- Density equation and calculations
- Specific heat capacity
- Energy stores and transfers
- Efficiency calculations
- ★ National Grid

Electricity

- Circuit diagrams and components
- Current, potential difference, and resistance - calculations
- I-V characteristics for different components
- Series and parallel circuits
- Mains electricity
- Power calculations
- Energy transferred calculations
- ★ The National Grid

Particle Model of Matter

- Changes of state and internal energy
- Specific latent heat
- ★ Gas pressure and temperature
- ★ Pressure-volume relationship for gases

Atomic Structure

- Development of the atomic model
- Alpha, beta, and gamma radiation
- Radioactive decay and half-life
- Uses of radiation
- ★ Nuclear fission and fusion



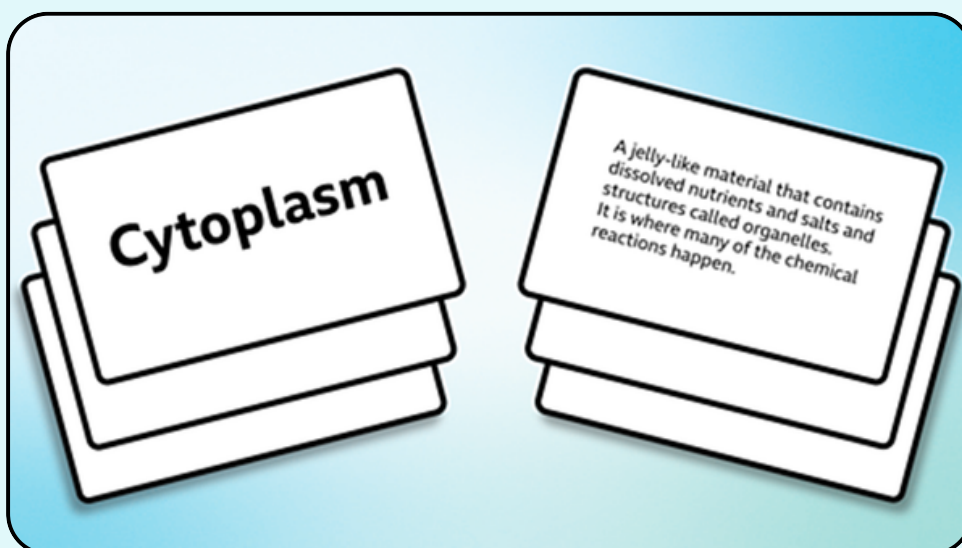
Where **EGScellence** thrives,
and the **EGSceptional** shine



YEAR 10 COMMON TRUST ASSESSMENTS

Revision Techniques.

- Flashcards: Write a question on the front of the flashcard and the answer on the back. Keep testing yourself regularly.



- Complete your weekly Sparx Science homework: this improves your ability to recall through constantly testing your retrieval.
- Use this prompt with AI and ask it to quiz you: "I am a KS3 student studying science. Please test me on **[topic name]** from the **AQA Combined Science** course. Ask me **one question at a time**. Give me **multiple choice / short answer / explain-why questions**. After each answer, **tell me if I am correct**. If I am wrong, **explain the correct answer simply**. At the end, **give me a short summary of what I need to revise.**"
- Partner up with a friend and learn a topic each. Then teach each other the topic.
- Ask your teachers for exam papers and questions to try.

